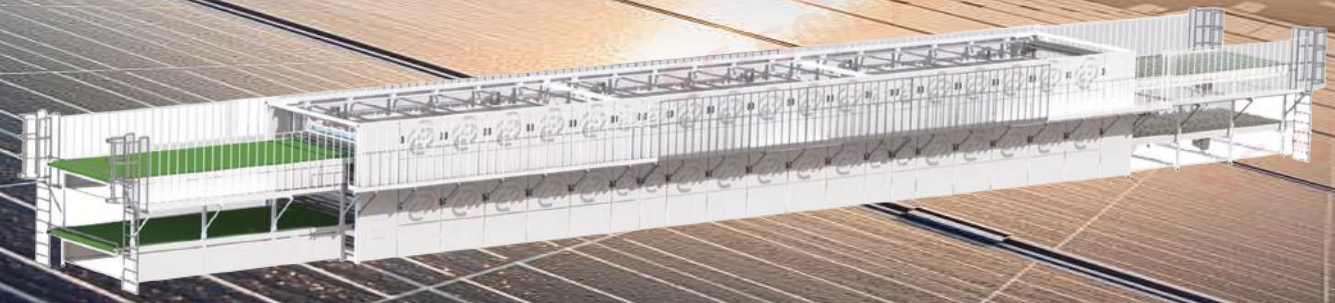


LAMINATOR

The main model includes single-layer& single-chamber/double-chamber/three-chamber laminator, double-layer & double-chamber/three-chamber laminator, three-layer & single-chamber/ double-chamber/three-chamber laminator etc., it can be customized according to customer requirements.

Laminator heating method: oil heating and electric heating, other sizes as per customer requirements will be customized.



Functionality

- Easy operation
- Excellent temperature uniformity
- More stable and reliable performance
- Power saving, clean, environmental protection
- Higher configuration, high yield



Specifications

Model	2700mm*8700mm		2700mm*9400mm		2700mm*10000mm	
	OL	EL	OL	EL	OL	EL
Heating method	Oil heating	Electric heating	Oil heating	Electric heating	Oil heating	Electric heating
Working temperature	RT-180°C		RT-180°C		RT-180°C	
Temperature uniformity	±1.5°C		±1.5°C		±1.5°C	
Temperature accuracy	±1°C		±1°C		±1°C	
Transmission accuracy	±3mm		±3mm		±3mm	
Yield	99.99%		99.99%		99.99%	
Working noise	≤80dB		≤80dB		≤80dB	



Single-layer& double-chamber Laminator



Double-layer& double-chamber Laminator



Three-layer& double-chamber Laminator