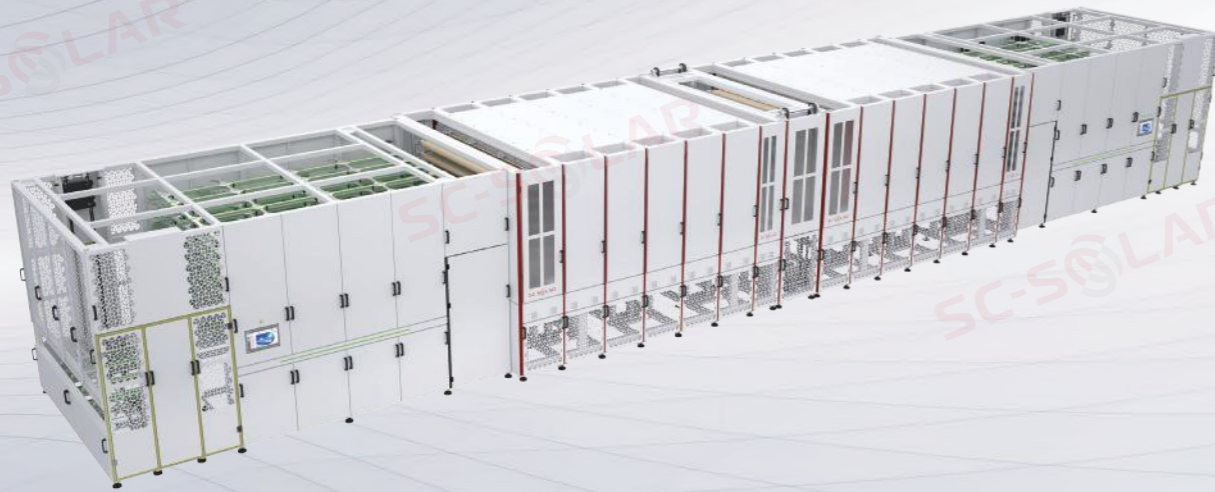


- Small footprint
- low energy consumption
- Fault self-adjustment
- High production capacity
- 5G information control management system
- Reduced personnel costs



FULLY AUTOMATIC ELECTROMAGNETIC HEATING MULTI-LAYER LAMINATOR

Features

- 8-layer chamber (effective lamination area 2820mm*4320mm, 182/210 module 1 pressure 24)
- Temperature stratified control, upper and lower chamber temperature equal electric heating system. The temperature rise rate PID is adjusted in real time, and the temperature rise rate adjustment range is 1.0°C-2.0°C/min
- Vacuum stratified control; The vacuum time is compressed to 180s
- Independent transmission positioning, servo drive
- Hydraulic lifting system + linear guide auxiliary mechanism
- Retractable stack is adopted for unloading and liquid cooling technology is adopted for module cooling to improve cooling efficiency. The cooling speed is adjustable, and the temperature drops to below 40° in 5 minutes
- The loading adopts the retractable stack, the integrated structure design of the lift module normalization +8 layer position module normalization, the input accuracy is higher, and the servo plus linear guide rail is stable and efficient
- Multi-layer laminator size: 25000mm*3950mm*4150mm
- Full dynamic digital MES control system, 50 "MES data display